

# CHAPEL STREET PRECINCT, ROCKDALE buildings A & B





design statement

Ground floor streetscape design has been coordinated with the following;

Rockdale Development Control Plan 2011  
Rockdale Technical Specification: Landscape

The NSW Planning & Environment Apartment Design Guide 2015  
Part 4: Landscape Design (4O)  
Part 4: Planting on Structures (4P)  
Approved Landscape Plan and Masterplan as noted on Consent DA-2016/241/A

- The design intent of ground floor streetscape and open space and is to:
- provide substantive plantings to building setbacks
  - establish distinctive planting treatments to entry lobbies,
  - enhance proposed public domain improvements to Chapel Lane and Lister Avenue
  - provide cohesive planting theme consistent with greater 'Chapel Street Precinct'

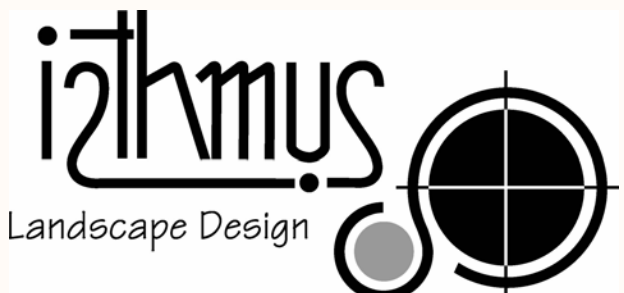
A mix of native and exotic groundcovers, accent plantings, screen shrubs and evergreen trees are proposed. A predominance of native species is proposed. Species are typically low maintenance and have low water requirements as per Sydney Water low water plant list. Planting design intent is to provide lush foliage with contrasting texture, colour and seasonal variation. Small and canopy tree species have been selected to allow for screening and to establish consistent site frontage planting theme. Species have been selected to be suitable to location and aspect. Distinct planting themes are provided to both common and private residential entries and frontages. Resident access is provided directly to public domain from ground floor units fronting Chapel Lane and Lister Avenue.

Planting areas provide a minimum soil depth of 600mm for accents and shrubs over and above required drainage and waterproofing and 800mm for small trees as per Apartment Design Guide 2015. A consolidated on-structure planting area is proposed within the site to allow for canopy and screen tree planting. Planter soil in this area will be mounded to achieve soil depth of 1000mm for large tree species. Trees proposed to this location have been selected due to their suitability for on-structure applications.

A step down in basement is provided to allow for deep soil tree planting to Building B frontage to Chapel Lane. Where step down is not provided on-structure planters are proposed to achieve required planter soil depths as per the Apartment Design Guide 2015.

All proposed plantings to Chapel Lane and Lister Avenue have been coordinated with approved 'Chapel Street Precinct' public domain works.

GROUND FLOOR



isthmus  
Landscape Design

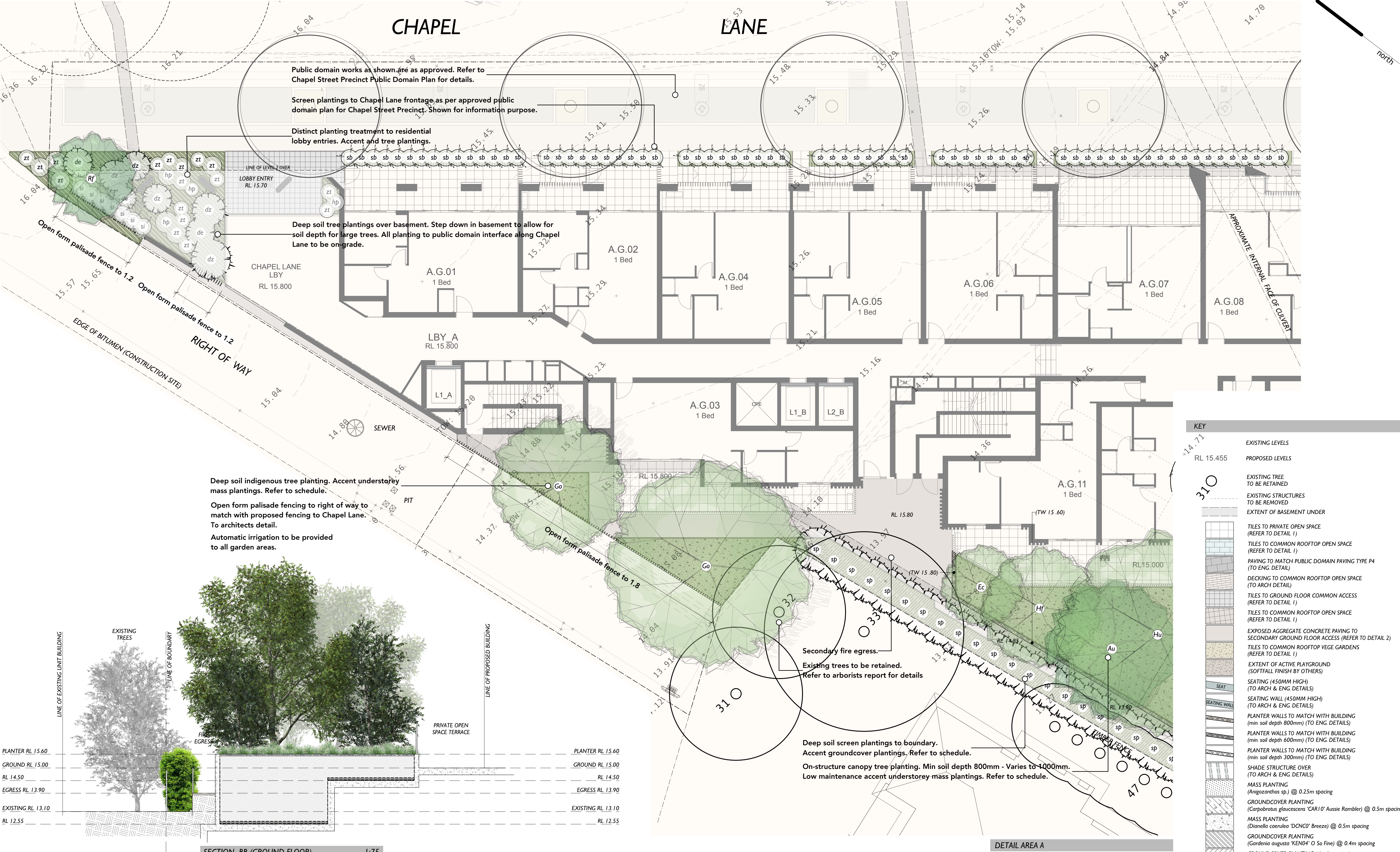
isthmus	pty	ltd	ACN 107362149
21 Central Avenue			Como 2226
Ph:+612 9528 4903			www.isthmus.com.au
Email:landscape@isthmus.com.au			

REV: AMENDMENT:		INT:	DATE:	LANDSCAPE PLAN - BUILDINGS A & B		DWG: IS0268DA2
				GROUND FLOOR		ISSUE: B
				DATE: MAY 2020		
B AUTHORITY APPROVAL		MW	04.05.20	SCALE: 1:200@A1 - 1:400@A3		
A AUTHORITY APPROVAL		MW	17.10.19			

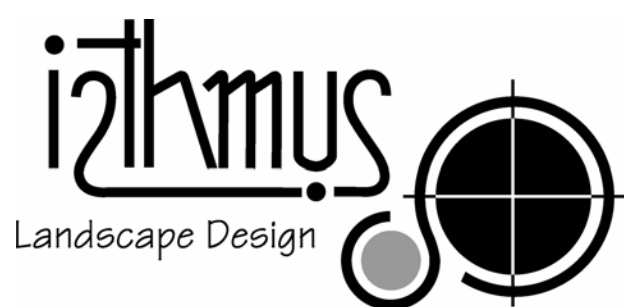


0 2 10 20m





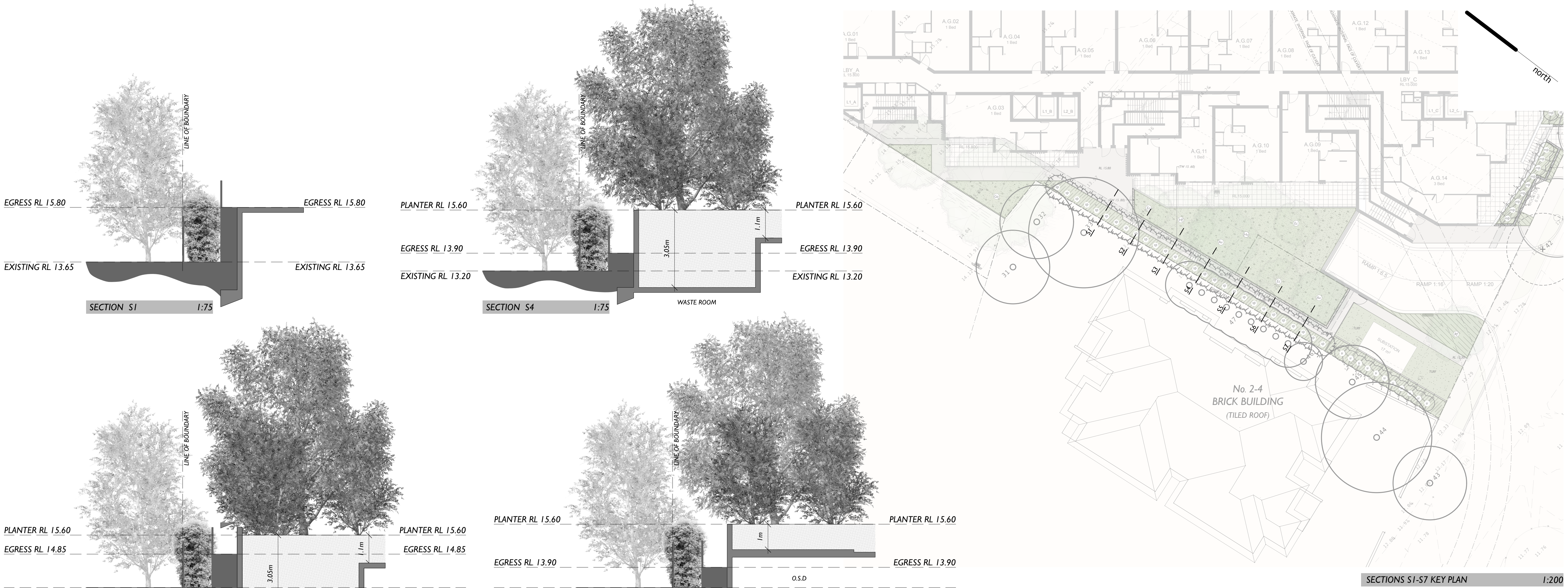
# building A - ground floor



isthmus	pty	ltd	ACN 107362149
21 Central Avenue			Como 2226
Ph:+612 9528 4903			www.isthmus.com.au
Email:landscape@isthmus.com.au			

REV:	AMENDMENT:	INT:	DATE:	LANDSCAPE PLAN - BUILDINGS A & B	DWG: IS0268DA3
				DETAIL AREA A - GROUND	ISSUE: B
B	AUTHORITY APPROVAL	MW	04.05.20	DATE: MAY 2020	CHapel STREET PRECINCT, ROCKDALE 2216
A	AUTHORITY APPROVAL	MW	17.10.19	SCALE: 1:100@A1 - 1:200@A3	0 1 5 10m

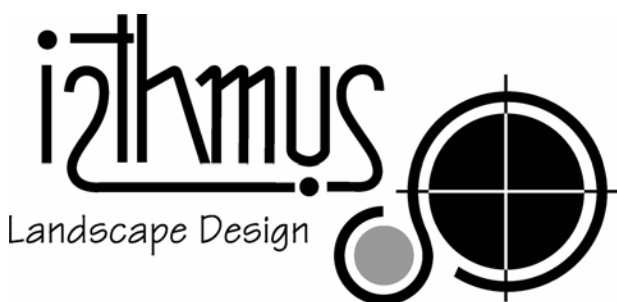




building A - ground floor



# building A - ground floor



isthmus	pty	ltd	ACN 107362149
21 Central Avenue			Como 2226
Ph:+612 9528 4903			www.isthmus.com.au
Email:landscape@isthmus.com.au			

REV:	AMENDMENT:	INT:	DATE:	LANDSCAPE PLAN - BUILDINGS A & B		DWG: IS0268DA4
				DETAIL AREA B - GROUND		ISSUE: B
B	AUTHORITY APPROVAL	MW	04.05.20	DATE:	MAY 2020	
A	AUTHORITY APPROVAL	MW	17.10.19	SCALE:	1:100@A1 - 1:200@A3	

0

5

10m

Secondary fire egress.

Deep soil screen plantings to boundary.

Accent groundcover plantings. Refer to schedule.

On-structure canopy tree planting. Min soil depth 800mm - Varies to 1000mm.

Accent understorey mass plantings. Refer to schedule.

Screen plantings to Chapel Lane frontage as per approved public domain plan for Chapel Street Precinct. Shown for information purpose.

Public domain works as shown are as approved. Refer to Chapel Street Precinct Public Domain Plan for details.

Planter walls to on-structure planting. Min soil depth 600mm.

Distinct planting treatment to residential lobby entries. Accent and tree plantings.

Existing trees to be retained. Refer to arborists report for details  
Automatic irrigation to be provided to all garden areas.

Deep soil accent tree planting. Mass accent understorey plantings. Refer to schedule.

Planter walls. Finish to match with building.  
Screen shrub planting. Refer to schedule.

## KEY

EXISTING LEVELS

RL 15.455

PROPOSED LEVELS

EXISTING TREE TO BE RETAINED

EXISTING STRUCTURES TO BE REMOVED

EXTENT OF BASEMENT UNDER

TILES TO PRIVATE OPEN SPACE (REFER TO DETAIL 1)

TILES TO COMMON ROOFTOP OPEN SPACE (REFER TO DETAIL 1)

PAVING TO MATCH PUBLIC DOMAIN PAVING TYPE P4 (TO ENG. DETAIL)

DECKING TO COMMON ROOFTOP OPEN SPACE (TO ARCH DETAIL)

TILES TO GROUND FLOOR COMMON ACCESS (REFER TO DETAIL 1)

TILES TO COMMON ROOFTOP OPEN SPACE (REFER TO DETAIL 1)

EXPOSED AGGREGATE CONCRETE PAVING TO SECONDARY GROUND FLOOR ACCESS (REFER TO DETAIL 2)

TILES TO COMMON ROOFTOP VEGE GARDENS (REFER TO DETAIL 1)

EXTENT OF ACTIVE PLAYGROUND (SOFTFALL FINISH BY OTHERS)

SEATING (450MM HIGH) (TO ARCH & ENG DETAILS)

SEATING WALL (450MM HIGH) (TO ARCH & ENG DETAILS)

PLANTER WALLS TO MATCH WITH BUILDING (min. soil depth 800mm) (TO ENG. DETAILS)

PLANTER WALLS TO MATCH WITH BUILDING (min. soil depth 600mm) (TO ENG. DETAILS)

PLANTER WALLS TO MATCH WITH BUILDING (min. soil depth 300mm) (TO ENG. DETAILS)

SHADE STRUCTURE OVER (TO ARCH & ENG DETAILS)

MASS PLANTING (Anigozanthos sp.) @ 0.25m spacing

GROUNDCOVER PLANTING (Carpobrotus glaucescens 'CAR10' Aussie Rambler) @ 0.5m spacing

MASS PLANTING (Dianella caerulea 'DCNCO' Breeze) @ 0.5m spacing

GROUNDCOVER PLANTING (Gardenia augusta 'KEN04' O So Fine) @ 0.4m spacing

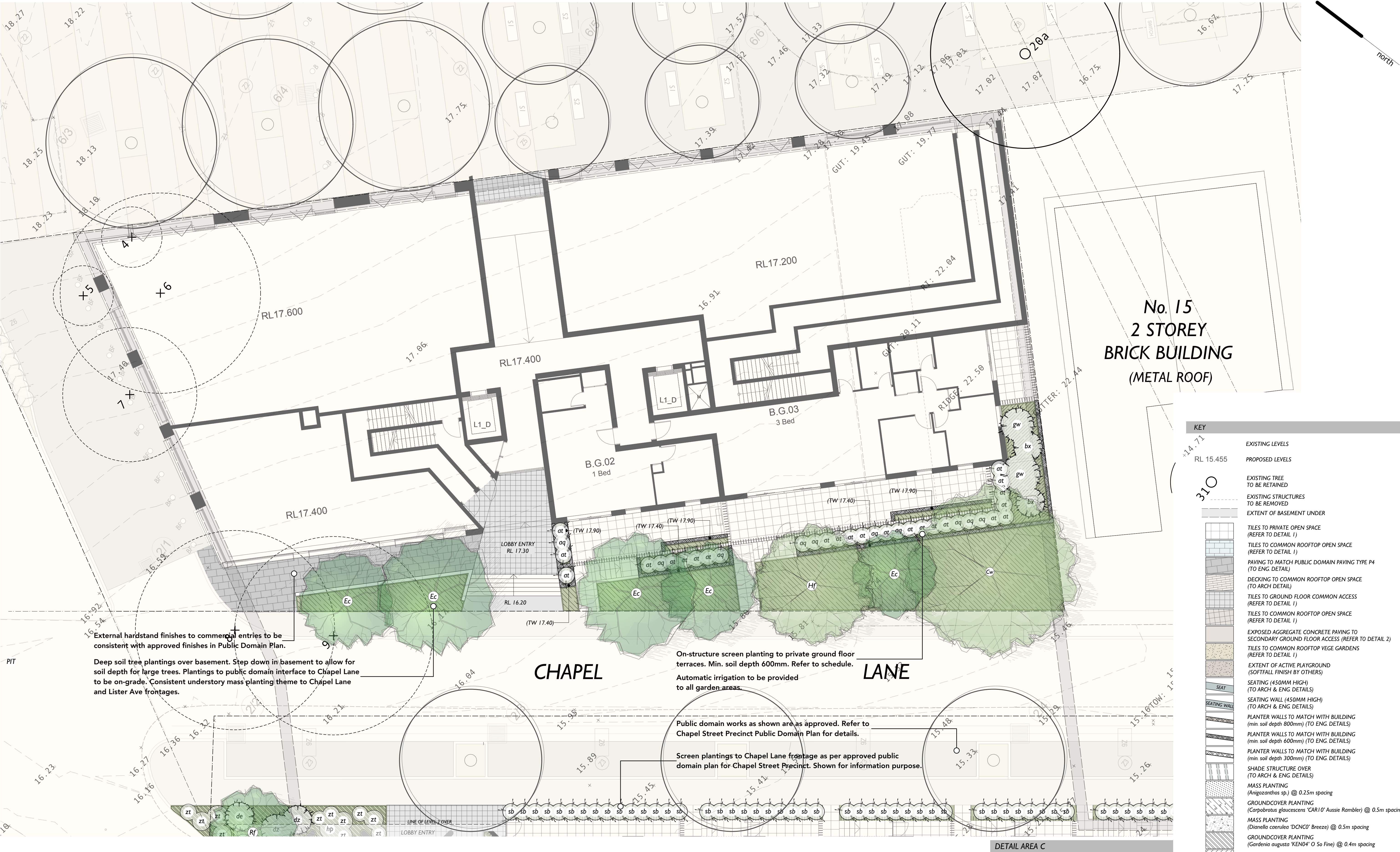
GROUNDCOVER PLANTING (check spacing) (Liriope muscari 'LIR' Just Right) @ 0.4m spacing

GROUNDCOVER PLANTING (Myoporum parvifolium 'PARV01' Yareena) @ 0.5m spacing

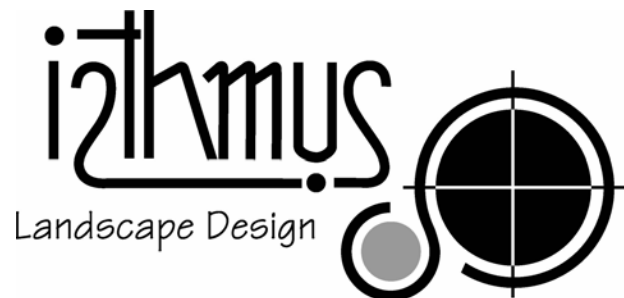
MASS PLANTING (Philodendron 'Xanadu') @ 0.4m spacing

GROUNDCOVER PLANTING (Viola hederacea) @ 0.5m spacing





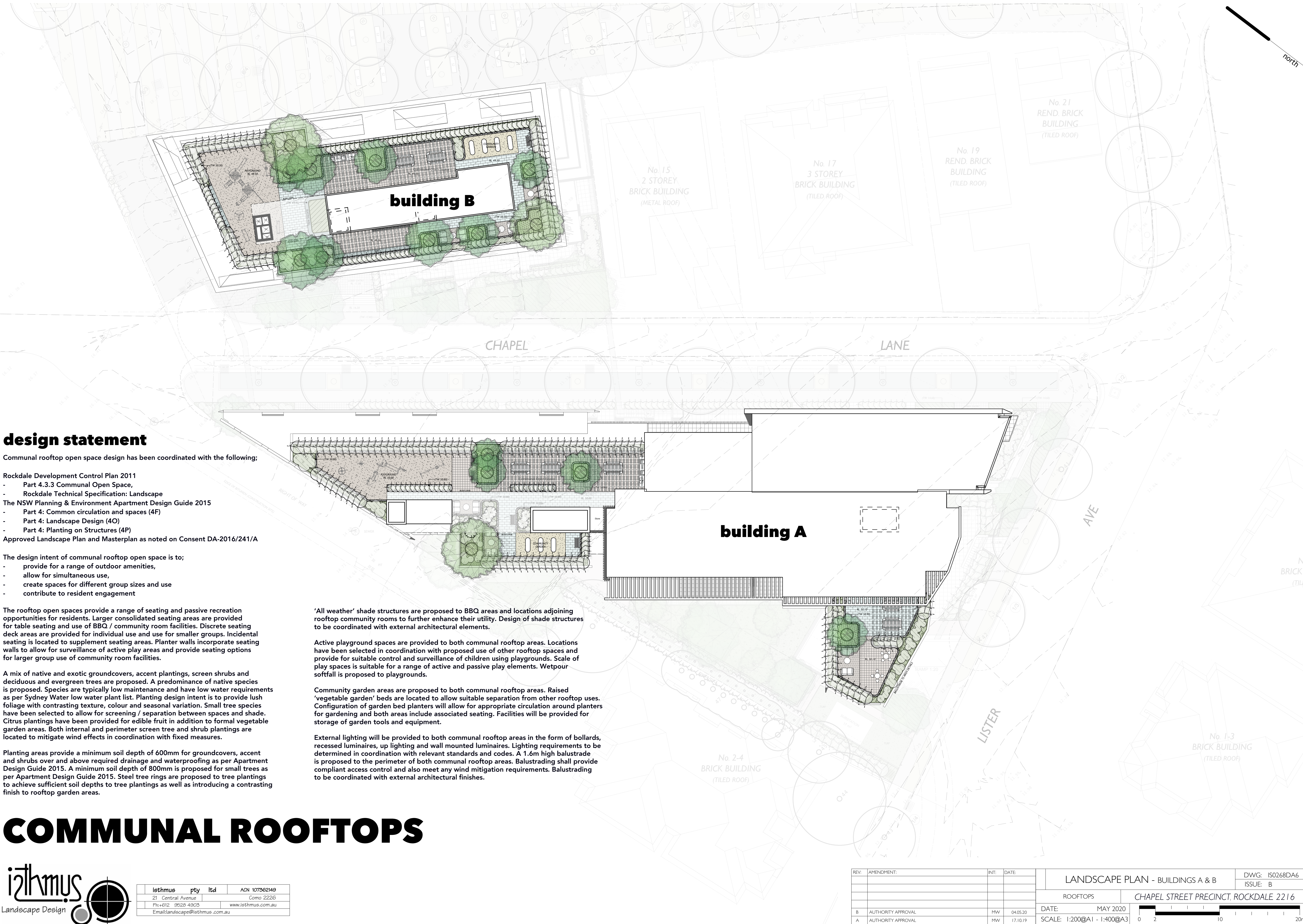
# building B - ground floor



isthmus	pty	ltd	ACN 107362149
21 Central Avenue			Como 2226
Ph:+612 9528 4903			www.isthmus.com.au
Email:landscapes@isthmus.com.au			

REV:	AMENDMENT:	INT:	DATE:	LANDSCAPE PLAN - BUILDINGS A & B	DWG: IS0268DA5
				DETAIL AREA C - GROUND	ISSUE: B
B	AUTHORITY APPROVAL	MW	04.05.20	DATE: MAY 2020	
A	AUTHORITY APPROVAL	MW	17.10.19	SCALE: 1:100@A1 - 1:200@A3	





## design statement

Communal rooftop open space design has been coordinated with the following;

- Rockdale Development Control Plan 2011
  - Part 4.3.3 Communal Open Space,
  - Rockdale Technical Specification: Landscape
- The NSW Planning & Environment Apartment Design Guide 2015
  - Part 4: Common circulation and spaces (4F)
  - Part 4: Landscape Design (4O)
  - Part 4: Planting on Structures (4P)

Approved Landscape Plan and Masterplan as noted on Consent DA-2016/241/A

The design intent of communal rooftop open space is to;

- provide for a range of outdoor amenities,
- allow for simultaneous use,
- create spaces for different group sizes and use
- contribute to resident engagement

The rooftop open spaces provide a range of seating and passive recreation opportunities for residents. Larger consolidated seating areas are provided for table seating and use of BBQ / community room facilities. Discrete seating deck areas are provided for individual use and use for smaller groups. Incidental seating is located to supplement seating areas. Planter walls incorporate seating walls to allow for surveillance of active play areas and provide seating options for larger group use of community room facilities.

A mix of native and exotic groundcovers, accent plantings, screen shrubs and deciduous and evergreen trees are proposed. A predominance of native species is proposed. Species are typically low maintenance and have low water requirements as per Sydney Water low water plant list. Planting design intent is to provide lush foliage with contrasting texture, colour and seasonal variation. Small tree species have been selected to allow for screening / separation between spaces and shade. Citrus plantings have been provided for edible fruit in addition to formal vegetable garden areas. Both internal and perimeter screen tree and shrub plantings are located to mitigate wind effects in coordination with fixed measures.

Planting areas provide a minimum soil depth of 600mm for groundcovers, accent and shrubs over and above required drainage and waterproofing as per Apartment Design Guide 2015. A minimum soil depth of 800mm is proposed for small trees as per Apartment Design Guide 2015. Steel tree rings are proposed to tree plantings to achieve sufficient soil depths to tree plantings as well as introducing a contrasting finish to rooftop garden areas.

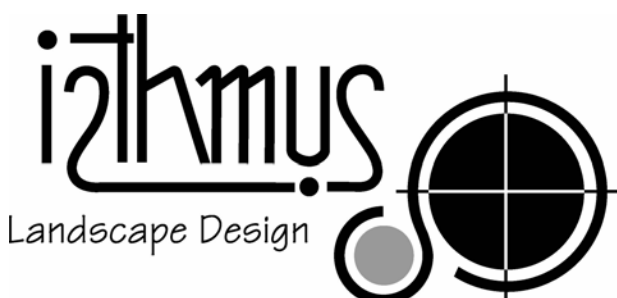
‘All weather’ shade structures are proposed to BBQ areas and locations adjoining rooftop community rooms to further enhance their utility. Design of shade structures to be coordinated with external architectural elements.

Active playground spaces are provided to both communal rooftop areas. Locations have been selected in coordination with proposed use of other rooftop spaces and provide for suitable control and surveillance of children using playgrounds. Scale of play spaces is suitable for a range of active and passive play elements. Wetpour softfall is proposed to playgrounds.

Community garden areas are proposed to both communal rooftop areas. Raised ‘vegetable garden’ beds are located to allow suitable separation from other rooftop uses. Configuration of garden bed planters will allow for appropriate circulation around planters for gardening and both areas include associated seating. Facilities will be provided for storage of garden tools and equipment.

External lighting will be provided to both communal rooftop areas in the form of bollards, recessed luminaires, up lighting and wall mounted luminaires. Lighting requirements to be determined in coordination with relevant standards and codes. A 1.6m high balustrade is proposed to the perimeter of both communal rooftop areas. Balustrading shall provide compliant access control and also meet any wind mitigation requirements. Balustrading to be coordinated with external architectural finishes.

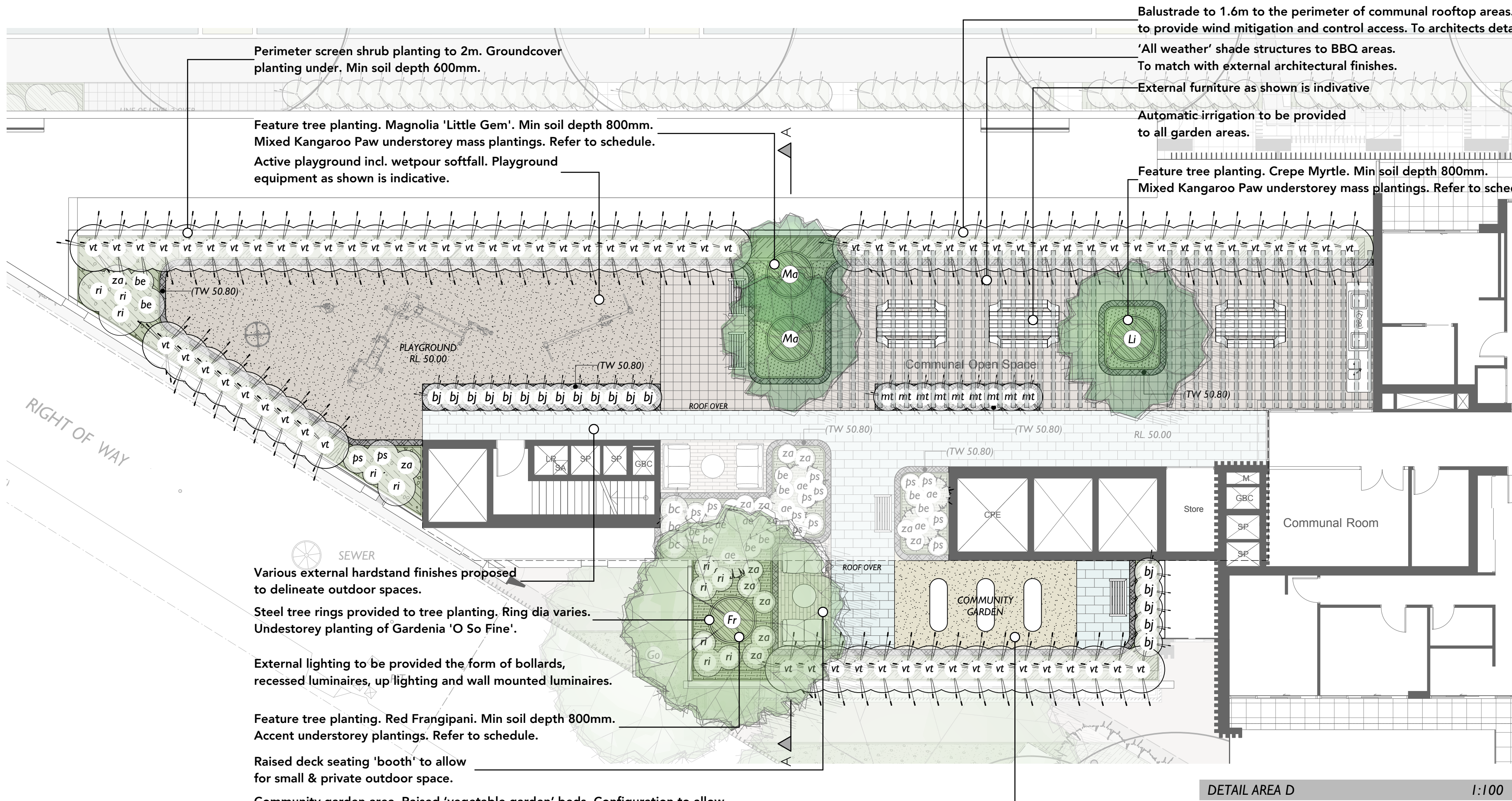
# COMMUNAL ROOFTOPS



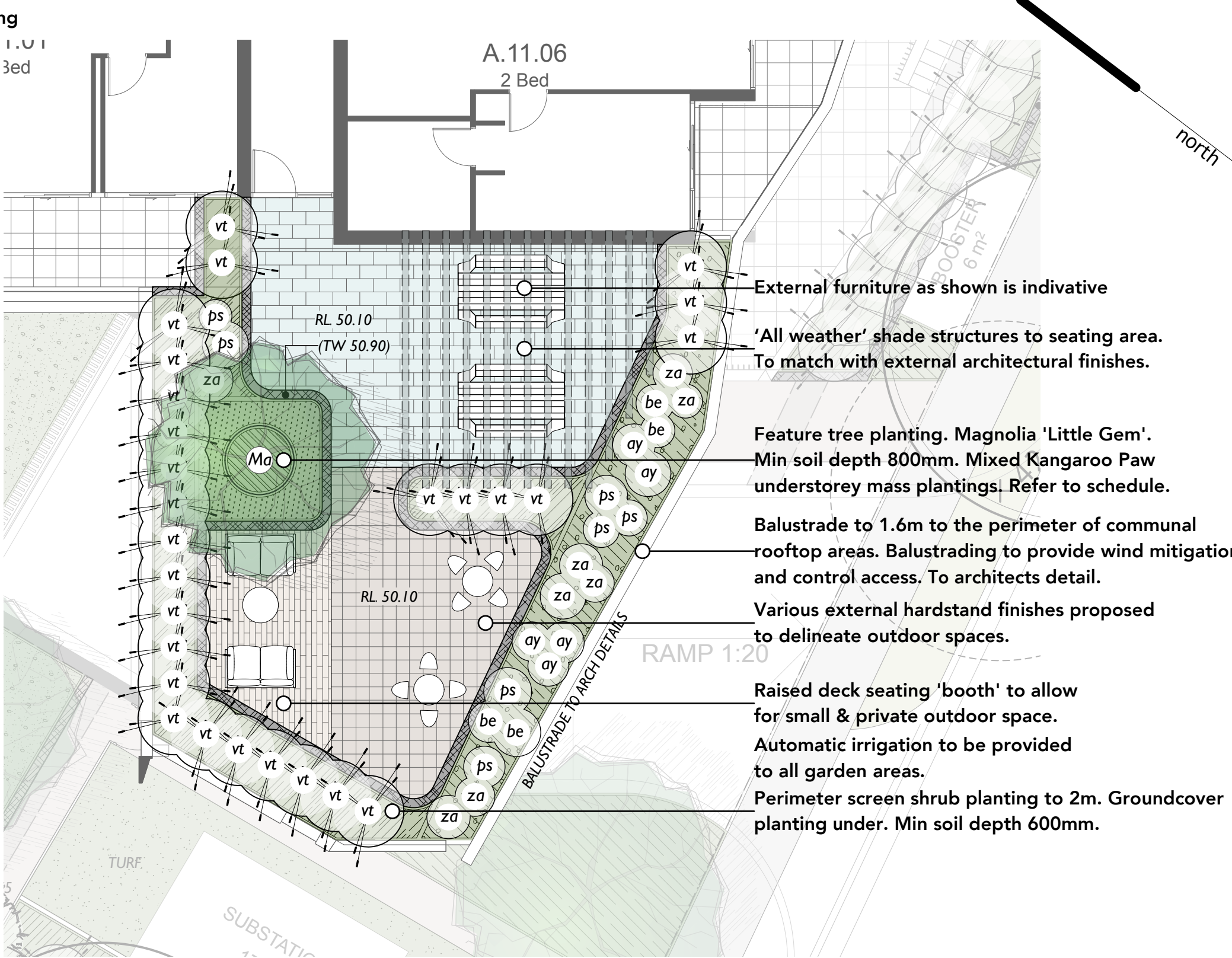
isthmus	pty	ltd	ACN 107362149
21 Central Avenue			Como 2226
Ph:+612 9528 4903			www.isthmus.com.au
Email:landscape@isthmus.com.au			

REV.	AMENDMENT:	INT.	DATE:	LANDSCAPE PLAN - BUILDINGS A & B		DWG: ISO268DA6
						ISSUE: B
				ROOFTOPS	CHAPEL STREET PRECINCT, ROCKDALE 2216	
B	AUTHORITY APPROVAL	MW	04.05.20	DATE:	MAY 2020	
A	AUTHORITY APPROVAL	MW	17.10.19	SCALE:	1:200@A1 - 1:400@A3	

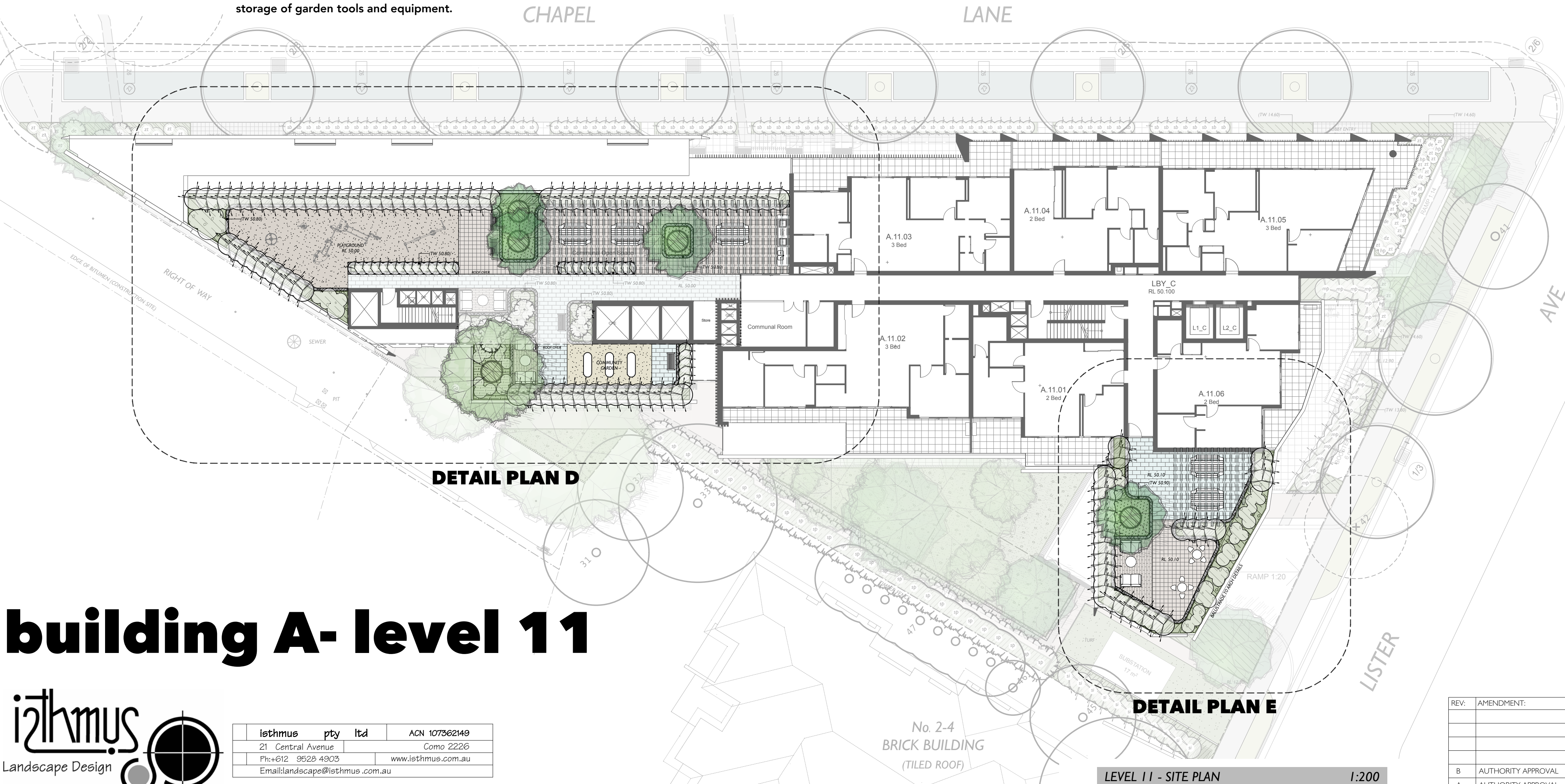




DETAIL AREA D 1:100



DETAIL AREA E 1:100



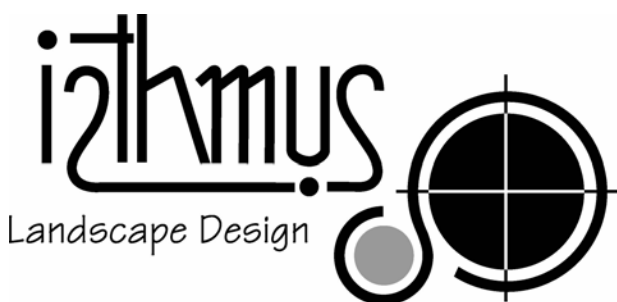
DETAIL PLAN D

DETAIL PLAN E

LEVEL 11 - SITE PLAN 1:200

KEY	
EXISTING LEVELS	
PROPOSED LEVELS	
EXISTING TREE TO BE RETAINED	
EXISTING STRUCTURES TO BE REMOVED	
EXTENT OF BASEMENT UNDER	
TILES TO PRIVATE OPEN SPACE (REFER TO DETAIL 1)	
TILES TO COMMON ROOFTOP OPEN SPACE (REFER TO DETAIL 1)	
PAVING TO MATCH PUBLIC DOMAIN PAVING TYPE P4 (TO ENG. DETAIL)	
DECKING TO COMMON ROOFTOP OPEN SPACE (TO ARCH DETAIL)	
TILES TO GROUND FLOOR COMMON ACCESS (REFER TO DETAIL 1)	
TILES TO COMMON ROOFTOP OPEN SPACE (REFER TO DETAIL 1)	
EXPOSED AGGREGATE CONCRETE PAVING TO SECONDARY GROUND FLOOR ACCESS (REFER TO DETAIL 2)	
TILES TO COMMON ROOFTOP VEGE GARDENS (REFER TO DETAIL 1)	
EXTENT OF ACTIVE PLAYGROUND (SOFTFALL FINISH BY OTHERS)	
SEATING (450MM HIGH) (TO ARCH & ENG DETAILS)	
SEATING WALL (450MM HIGH) (TO ARCH & ENG DETAILS)	
PLANTER WALLS TO MATCH WITH BUILDING (min. soil depth 800mm) (TO ENG. DETAILS)	
PLANTER WALLS TO MATCH WITH BUILDING (min. soil depth 600mm) (TO ENG. DETAILS)	
PLANTER WALLS TO MATCH WITH BUILDING (min. soil depth 300mm) (TO ENG. DETAILS)	
SHADE STRUCTURE OVER (TO ARCH & ENG DETAILS)	
MASS PLANTING (Anigozanthos sp.) @ 0.25m spacing	
GROUNDCOVER PLANTING (Carpobrotus glaucescens 'CAR10' Aussie Rambler) @ 0.5m spacing	
MASS PLANTING (Dianella caerulea 'DCNCO' Breeze) @ 0.5m spacing	
GROUNDCOVER PLANTING (Gardenia augusta 'KEN04' O So Fine) @ 0.4m spacing	
GROUNDCOVER PLANTING (check spacing) (Liriope muscari 'LIR' Just Right) @ 0.4m spacing	
GROUNDCOVER PLANTING (Myoporum parvifolium 'PARV01' Yareena) @ 0.5m spacing	
MASS PLANTING (Philodendron 'Xanadu') @ 0.4m spacing	
GROUNDCOVER PLANTING (Viola hederacea) @ 0.5m spacing	

# building A- level 11

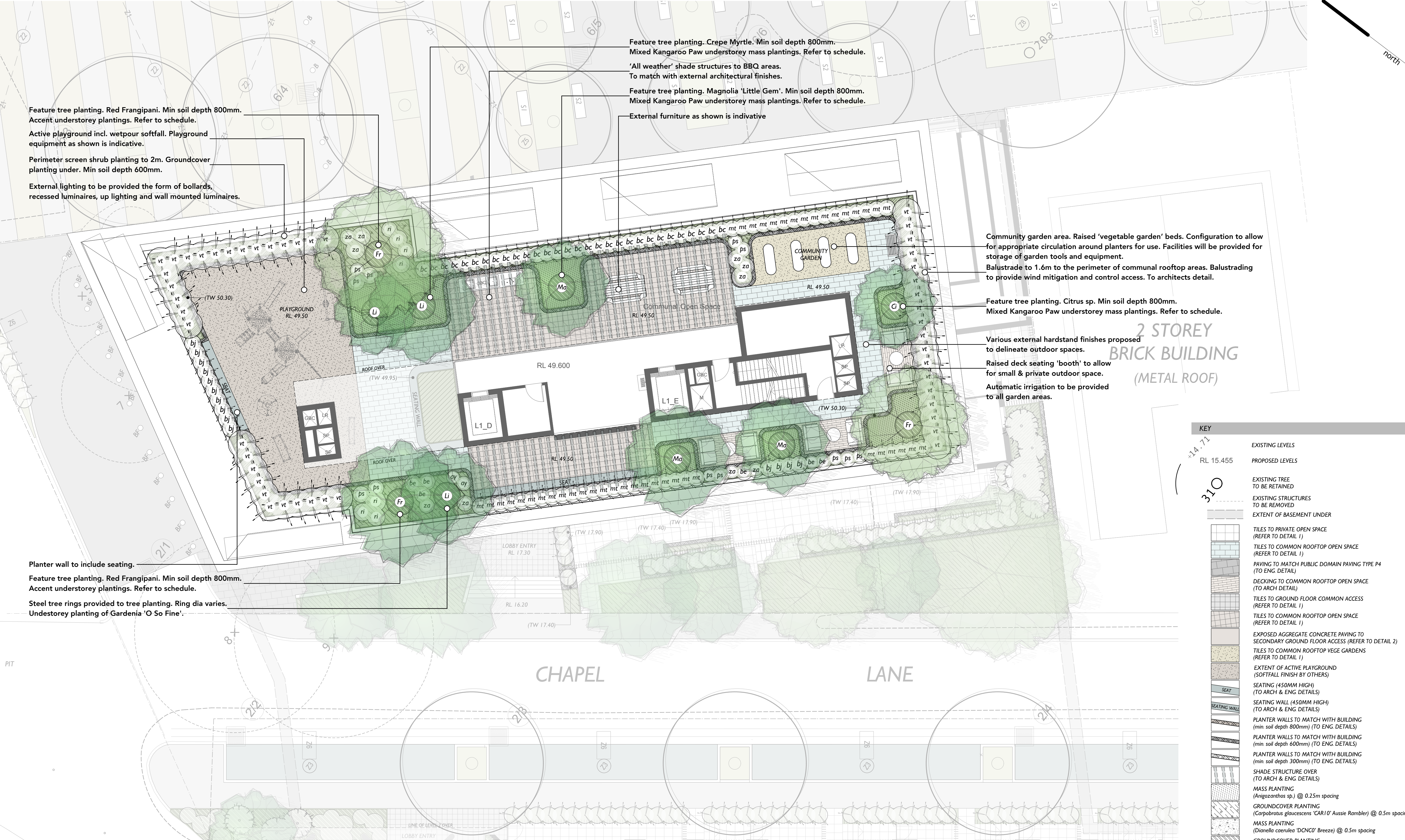


isthmus	pty	ltd	ACN 107362149
21 Central Avenue			Como 2226
Ph:+612 9528 4903			www.isthmus.com.au
Email:landscape@isthmus.com.au			

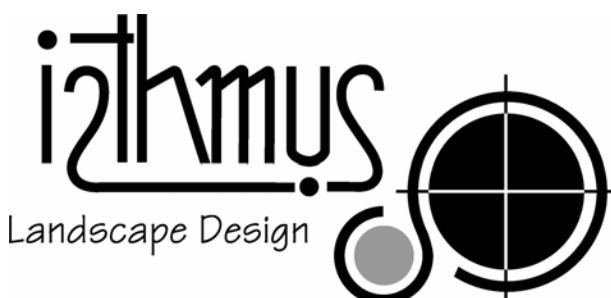
No. 2-4  
BRICK BUILDING  
(TILED ROOF)

REV:	AMENDMENT:	INT:	DATE:	LANDSCAPE PLAN - BUILDINGS A & B		DWG: IS0268DA7
				BUILDING A - LEVEL 11		ISSUE: B
				CHAPEL STREET PRECINCT, ROCKDALE 2216		
B	AUTHORITY APPROVAL	MW	04.05.20	DATE:	MAY 2020	
A	AUTHORITY APPROVAL	MW	17.10.19	SCALE:	AS SHOWN	





# building B- level 10

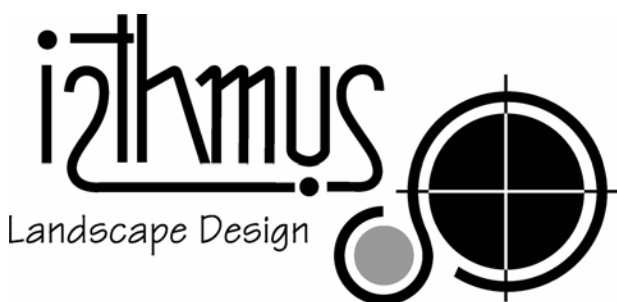


isthmus	pty	ltd	ACN 107362149
21 Central Avenue			Como 2226
Ph:+612 9528 4903			www.isthmus.com.au
Email:landscap@isthmus.com.au			

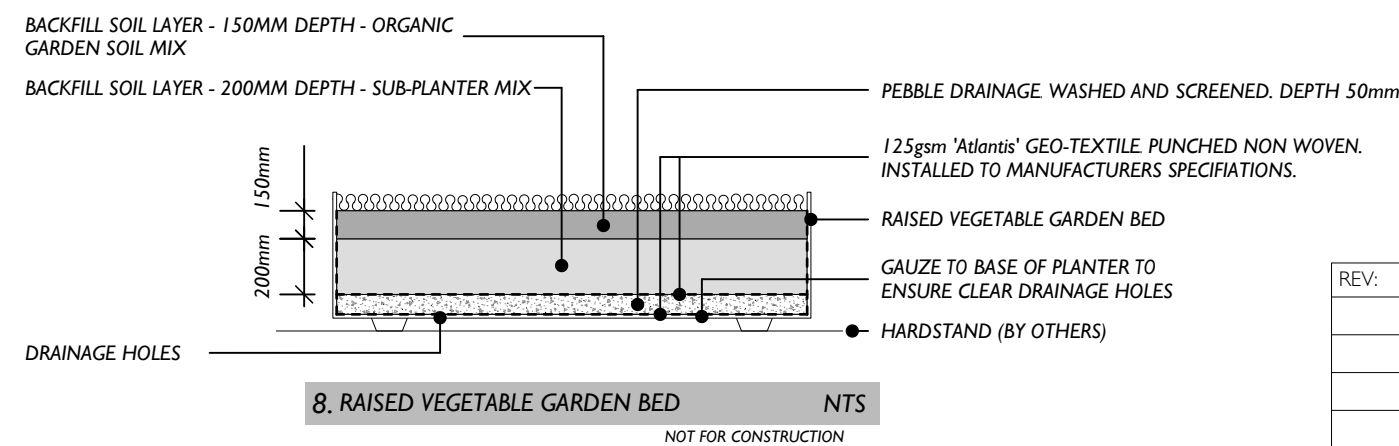
REV:	AMENDMENT:	INT:	DATE:	LANDSCAPE PLAN - BUILDINGS A & B		DWG: IS0268DA8
				BUILDING B - LEVEL 10		ISSUE: B
				CHapel STREET PRECINCT, ROCKDALE 2216		
B	AUTHORITY APPROVAL	MW	04.05.20	DATE:	MAY 2020	
A	AUTHORITY APPROVAL	MW	17.10.19	SCALE:	1:100@A1 - 1:200@A3	



# DETAILS & SCHEDULES



isthmus	pty	ltd	ACN 107962149
21 Central Avenue			Como 2226
Ph:+612 9528 4903			www.isthmus.com.au
Email:landscape@isthmus.com.au			



## MAINTENANCE SPECIFICATION

Maintenance shall apply to all soft landscape materials installed as per landscape plan IS0268DA1-8 and as accepted by Bayside Council including street tree planting. Maintenance of softworks shall be for a minimum of 52 weeks after practical completion.

Minimum recurrent maintenance shall be as per schedule and consist but not be limited to the following works:

- Water all plants twice per week or as necessary to ensure maximum plant growth. For the first 8 weeks from establishment maintain moisture to a depth of 100mm.
- Apply appropriate weed control sprays where necessary.
- Regularly cultivate to ensure water penetration to plants and to keep the area in a neat and tidy condition. Re-mulch as necessary to all mass planted areas.
- Spray to control pests and diseases.
- Apply organic slow release fertiliser to garden areas at 3 monthly intervals through spring and summer. Organic liquid fertilizer to be applied throughout spring & summer as required.
- Replace plants which fail with plants of a similar size and quality as originally specified (at contractors cost), prior to next inspection.
- Report any incidence of plants stolen or destroyed by vandalism. Replace as requested.
- Adjust stakes and ties to plants as necessary. Ensure strangulation of plants does not occur.
- Prune and shape plants as required. Shrub plantings to site boundaries are to be pruned to allow for access where required.
- Defects of faults arising out of defective workmanship are to be made good.
- Irrigation system and components are to be inspected at regular intervals to ensure correct operation. Minor repairs are to be undertaken to components. System failures are to be reported to body corporate representative for action.
- A final inspection shall be made by the landscape architect at the conclusion of the 52 week maintenance period. Any items requiring rectification shall be repaired to satisfaction of the Landscape Architect.

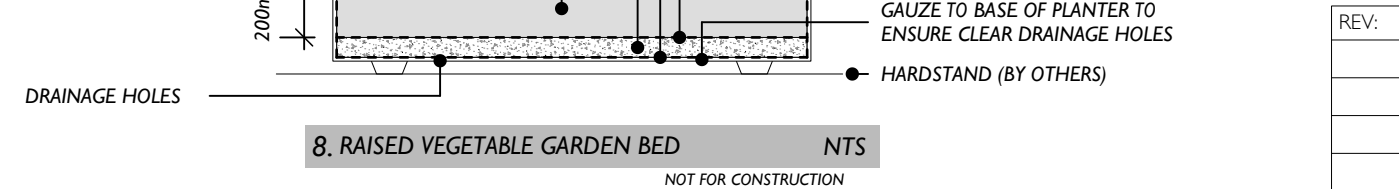
## PLANT SCHEDULE

Trees		COMMON NAME	MATURE HEIGHT (M)	MATURE SPREAD (M)	QUANTITY	SIZE	STAKING
BOTANICAL NAME							
Hu	Arbutus x andrachnoides	Hybrid Strawberry Tree	5 - 10m	6 - 8m	1	75L	YES
Au	Arbutus unedo	Strawberry tree	4 - 6m	4 - 6m	2	75L	YES
Cw	Ceratopetalum apetalum	Coochwood	15 - 20m	3.5 - 6m	1	100L	YES
Cl	Citrus x meyeri	Meyer lemon	2 - 3m	2.0 - 3.5m	1	100L	YES
Ec	Elaeocarpus reticulatus	Blueberry Ash	5 - 10m	6 - 10m	8	100L	YES
Fr	Plumeria rubra	Red Frangipani	5 - 10m	6 - 10m	4	100L	YES
Go	Glochidion ferdinandi	Cheese Tree	5 - 10m	6 - 10m	2	100L	YES
Hf	Hymenosporum flavum	Native Frangipani	5 - 10m	0.3 - 0.6m	2	100L	YES
Lj	Lagerstroemia indica 'Tuscarora'	Tuscarora Crepe Myrtle	5 - 10m	3.5 - 6m	4	100L	YES
Ma	Magnolia grandiflora 'Little Gem'	Little Gem Southern Magnolia	3 - 5m	2.0 - 3.5m	6	100L	YES
Rf	Randia fitzalanii	Native Gardenia	3 - 5m	2.0 - 3.5m	4	75L	YES
be	Buxus microphylla	Japanese Box	1.5 - 3m	1.2 - 2.0m	20	25L	NO
bj	Callistemon viminalis 'LJ1' Better John	Better John	0.6 - 1.2m	0.6 - 0.9m	31	25L	YES
bc	Callistemon viminalis 'LCO1' Macarthur	Macarthur	1.8m	1.5m	33	25L	YES
mt	Metrosideros 'Tahiti'	New Zealand Christmas Bush	0.75 - 0.9m	0.6 - 0.9m	53	15L	YES
mp	Muraya paniculata	Orange Jessamine	1.5 - 3m	3.5 - 6m	16	15L	YES
ps	Pittosporum tobira 'Miss Muffett'	Pittosporum 'Miss Muffett'	0.5m	0.5m	33	15L	NO
ri	Rhaphiolepis indica 'RAPH01' Cosmic White	Cosmic White	1.5 - 2.0m	1.5m	18	15L	NO
si	Syzygium australe 'Aussie Boomer'	Lilly Pilly	1.5 - 2m	0.8 - 1.2m	18	25L	YES
sp	Syzygium australe 'Resilience'	Lilly Pilly	3m	1.5m	28	25L	YES
sb	Syzygium australe 'Tiny Trev'	Lilly Pilly	0.5 - 1.2m	0.3 - 0.7m	85	25L	NO
vt	Viburnum odoratissimum 'VOCI' Accents	Dense Fence	2.5m	2m	149	25L	YES
ay	Agave attenuata	Lions Tail	0.6 - 0.75m	0.6 - 0.9m	7	25L	N/A
at	Alpinia caerulea 'Red Back'	Native Ginger	0.9 - 1.5m	0.9 - 1.2m	23	15L	N/A
aq	Alpinia zerumbet cv 'Green Shell'	Green Shell Ginger	0.9 - 1.5m	0.9 - 1.2m	10	15L	N/A
zt	Alpinia mutica	False Cardamom Ginger	0.6 - 0.75m	0.6 - 0.75m	49	5L	N/A
Anigozanthos 'Amber Velvet'		Kangaroo Paw	0.5m	0.4m	55	150mm	N/A
Anigozanthos 'Gold Velvet'		Kangaroo Paw	0.4 - 0.5m	0.4m	55	150mm	N/A
Anigozanthos 'Ruby Velvet'		Kangaroo Paw	0.4m	0.3m	55	150mm	N/A
ae	Asplenium nidus	Bird's-Nest Fern	0.9 - 1.5m	2.0 - 3.5m	7	15L	N/A
bx	Bambusa textilis var. gracilis	Glenaea Weavers Bamboo	3 - 5m	2.0 - 3.5m	2	45L	YES
de	Doryanthes excelsa	Slyder Lily, Giant Lily	1.5 - 3m	1.2 - 2.0m	12	25L	N/A
dz	Doryanthes palmeri	Spear Lily	2 - 2.5m	1.5 - 2.0m	11	25L	N/A
gw	Gigantochloa wrayi	Malaysian Bamboo	5 - 10m	1.2 - 2.0m	2	45L	YES
hp	Heliconia pendula cv "Red waxy"	False Bird of Paradise	2.5 - 3m	1 - 2m	17	45L	N/A
za	Zamia furfuracea	Cardboard Palm	0.9 - 1.5m	0.9 - 1.2m	33	15L	N/A
Groundcovers and Climbers							
Carpobrotus glaucescens 'CARI0' Aussie Rambler		Pig Face	0.2m	2m	142	100mm	N/A
Dianella caerulea 'DCNCO' Breeze		Flax Lily	0.3 - 0.4m	0.5m	410	100mm	N/A
Gardenia augusta 'KEN04' O So Fine		O So Fine	0.3m	1m	260	100mm	N/A
Liriope muscari 'LIRJ' Just Right		Just Right	0.5m	0.5m	120	100mm	N/A
Myoporum parvifolium 'PARV01' Yareana		Myoporum	0.1m	1m	322	100mm	N/A
Philodendron 'Xanadu'		Philodendron	0.75 - 0.9m	0.9 - 1.2m	463	100mm	N/A
Viola hederacea		Native Violet	0.1	0.3 - 0.7m	268	TUBE	N/A

## MAINTENANCE SCHEDULE

	December-February	March-May	June-August	September-November
WATERING				
Turf	n/a	n/a	n/a	n/a
Garden Areas	Twice weekly	Weekly	As required	Weekly
WEED CONTROL				
Turf	n/a	n/a	n/a	n/a
Garden Areas	Fortnightly	As required	As required	Fortnightly
PEST CONTROL				
Turf	n/a	n/a	n/a	n/a
Garden Areas	Monthly	As required	As required	Quarterly
FERTILISING				
Turf	n/a	n/a	n/a	n/a
Garden Areas	Quarterly	As required	As required	Quarterly
PRUNING				
Garden Areas	Weekly	As required	As required	Fortnightly
TOP DRESSING (Annually)				
Turf	n/a	n/a	n/a	n/a
MOWING				
Turf	n/a	n/a	n/a	n/a
MULCHING (annually)	Weekly	As required	As required	Fortnightly
Garden Areas				October

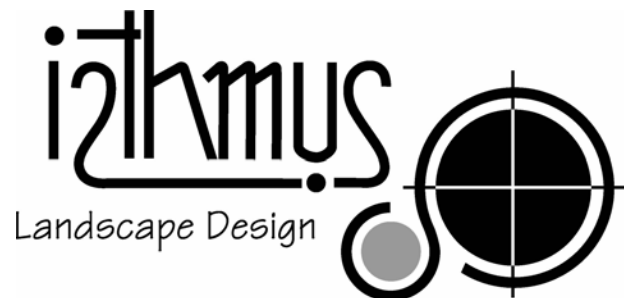
isthmus	pty	ltd	ACN 107962149
21 Central Avenue			Como 2226
Ph:+612 9528 4903			www.isthmus.com.au
Email:landscape@isthmus.com.au			



REV:	AMENDMENT:	INT:	DATE:	LANDSCAPE PLAN - BUILDINGS A & B		DWG: IS0268DA9
				DETAILS & SCHEDULES		ISSUE: B
				CHAPEL STREET PRECINCT, ROCKDALE 2216		
B	AUTHORITY APPROVAL	MW	04.05.20	DATE:	MAY 2020	
A	AUTHORITY APPROVAL	MW	17.10.19	SCALE:	AS SHOWN	



existing trees



isthmus	pty	ltd	ACN 107362149
21 Central Avenue			Como 2226
Ph:+612 9528 4903			www.isthmus.com.au
Email:landscape@isthmus.com.au			

REV:	AMENDMENT:	INT:	DATE:	LANDSCAPE PLAN - BUILDINGS A & B		DWG: IS0268DA10
				EXISTING TREES		ISSUE: B
B	AUTHORITY APPROVAL	MW	04.05.20	DATE:	MAY 2020	0 2 10 20m
A	AUTHORITY APPROVAL	MW	17.10.19	SCALE:	1:200@A1 - 1:400@A3	

KEY

○ 21  
+ 29

EXISTING TREE TO BE RETAINED  
(NUMBERED AS PER ARBORISTS REPORT)

EXISTING TREE TO BE REMOVED  
(NUMBERED AS PER ARBORISTS REPORT)

NOTE:  
PLAN TO BE READ IN CONJUNCTION WITH ARBORICULTURAL IMPACT ASSESSMENT  
REPORT PREPARED BY THE ENTS TREE CONSULTANCY. TREE RETENTION AS SHOWN  
IS CONSISTENT WITH EXISTING CONSENT DA-2016/241/A AND APPROVED PUBLIC  
DOMAIN WORKS. TREE LOCATIONS ARE SHOWN FOR INFORMATION PURPOSE ONLY.

EXISTING TREE SCHEDULE		
#	Botanic Name	Common Name
4	Melaleuca bracteata	Black tea tree
5	Melaleuca amillaris	Honey Myrtle
6	Eucalyptus botryoides	Swamp Mahogany
7	Lagerstroemia indica	Crepe Myrtle
8	Eucalyptus botryoides	Swamp Mahogany
9	Agonis flexuosa	Willow Myrtle
20a	Lophostemon confertus	Brush Box
31	Eucalyptus scoparia	Wallangarra White Gum
32	Ficus rubiginosa	Port Jackson Fig
33	Casuarina glauca	She Oak
41	Callistemon viminalis	Bottle Brush
42	Callistemon viminalis	Bottle Brush
43	Callistemon viminalis	Bottle Brush
44	Eucalyptus scoparia	Wallangarra White Gum
45	Banksia integrifolia	Coastal Banksia
46	Melaleuca bracteata	Black Tea Tree
47	Elaeocarpus reticulatus	Blueberry Ash

NOTE:  
\* TREE NOTED AS 20a IN EXISTING CONSENT. NOTED AS 20 IN ARBORISTS REPORT.